



 **Collomix**

**Grinding in the
champions' class**

Surface technology
by Collomix

Concrete grinder

Rely on Collomix when treating surfaces.
Outstanding performance and perfect grinding
results impress the professional.

CMG 1700

The compact grinder for cup wheels with \varnothing 125 mm

Powerful and with outstanding performance: The Collomix CMG 1700 sets standards in quality, performance and safety. With its powerful 1700 watts and a comprehensive range of grinding wheels, it's a real all-rounder for small to medium-sized surfaces.

Dust is created wherever grinding takes place. This not only endangers your health, it also makes your work considerably more difficult. The 35 mm socket on the hood of the CMG 1700 ensures uncomplicated connection of a dust extractor. The closed rubber lamellar ring also prevents dust discharge.

A smart segment opening has been fitted in the hood of the CMG 1700 to allow you to grind close to edges and borders. In this regard, the soft start takes care of your safety in the same way as overload protection.

Thanks to the adjustable grip, you can always work comfortably and without almost any fatigue setting in.



Practical segment opening for precise working on edges



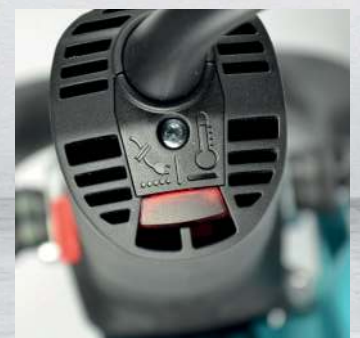
Closed lamellar ring for low-dust working*

Technical data

Output:	1700 W / 230 V
Speed:	9600 min ⁻¹
Grinding wheel \varnothing :	125 mm
Weight:	3.0 kg
Suction nozzle:	\varnothing 35 mm
Art. no.:	19200



Robust case for safe and practical storage



Visual performance monitoring as overload protection



Comfortable grip for an optimum hold and safe grinding



*Closed lamellar ring for low-dust working**

Technical data

Output:	2600 Watt / 230 V
Speed:	6600 min ⁻¹
Grinding wheel Ø:	180 mm
Weight:	6.8 kg
Suction nozzle:	Ø 35 mm
Art. no.:	19201



Visual performance monitoring as overload protection



The high-performance motor of the Collomix CMG 2600 delivers an impressive 2600 watts. This makes the "big brother" of the CMG 1700 perfectly suited for extensive grinding tasks under the toughest of conditions.

Just like the CMG 1700, the Collomix CMG 2600 is ideal for smoothing concrete and screed surfaces, removing cement-based tile adhesives and formwork seams. Thanks to the exposure area, which is 44% larger, you will be able to work much more quickly with the CMG 2600. We do of course also pay attention to your health with the large of the two Collomix grinders: In combination with a de-

CMG 2600

The practical power pack for cup wheels with Ø 180 mm

duster of filter class "M" (e.g. the VAC 35 M), your workplace remains virtually dust-free, thanks to the extraction nozzle on the metallic protective hood. The adjustable grip is also vibration-damped to reduce vibrations and to make working with the CMG 2600 as safe and comfortable as possible.

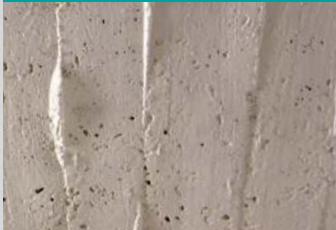
**Low-dust working only possible in conjunction with a deduster of filter class "M", e.g. the VAC 35 M (art. no. 19007)*

The range of grinding cups

for concrete grinder CMG 1700 (∅ 125 mm)



BST 125 Cyclon



**For hard substrates:
for rough grinding**

Suitable for

- Old concrete
- Hard screed
- Removal of formwork seams
- Lime sandstone
- Lime-cement plaster
- Levelling natural stone

Technical data

Art. no.	19295
Diameter:	125 mm
Height:	22 mm
Bore:	22.23 mm
Number of segments:	12
Height of segments:	7 mm



UST 125 Universal



**Standard diamond cup wheel
for abrasive material**

Suitable for

- Fresh concrete
- Screed
- Putty
- Mineral adhesives
- Cement plaster
- Abrasive natural stone

Technical data

Art. no.	19294
Diameter:	125 mm
Height:	22 mm
Bore:	22.23 mm
Number of segments:	8
Height of segments:	7 mm



GST 125 Grinder



**High-precision diamond cup wheel
for abrasive material**

Suitable for

- Fresh concrete
- Sinter layers
- Tile adhesive
- Fresh screed
- Cement plaster
- Gypsum plaster
- Soft natural stone

Technical data

Art. no.	19293
Diameter:	125 mm
Height:	22 mm
Bore:	22.23 mm
Number of segments:	8
Height of segments:	7 mm



PST 125 Strap-it



**PCD diamond cup wheel:
for elastic material**

Suitable for

- Elastic protective paints
- Adhesives
- Sealants
- Latex and oil paints
- Bitumen
- Polyurethane
- Epoxy resin

Technical data

Art. no.	19296
Diameter:	125 mm
Height:	22 mm
Bore:	22.23 mm
Number of segments:	6
Height of segments:	2.5 mm



Become a part of the
Collomix community!
#teamCOLLOMIX

Collomix specialized dealers